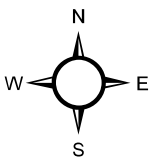
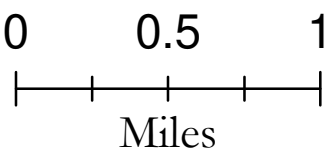


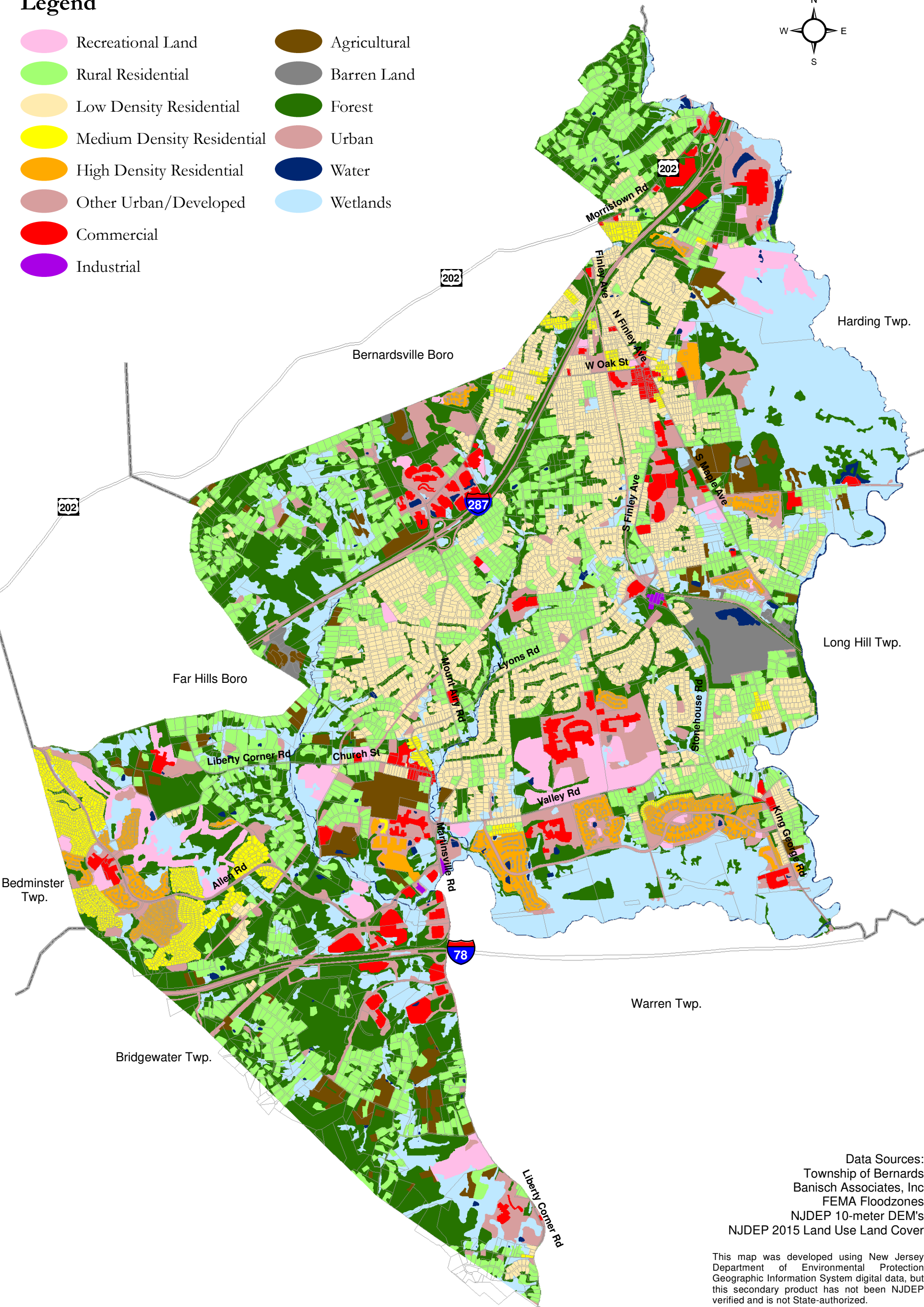
Figure II-1 Land Use/Land Cover

Township of Bernards
Somerset County, NJ
December 2023



Legend

- | | |
|----------------------------|--------------|
| Recreational Land | Agricultural |
| Rural Residential | Barren Land |
| Low Density Residential | Forest |
| Medium Density Residential | Urban |
| High Density Residential | Water |
| Other Urban/Developed | Wetlands |
| Commercial | |
| Industrial | |




Data Sources:
Township of Bernards
Banisch Associates, Inc
FEMA Floodzones
NJDEP 10-meter DEM's
NJDEP 2015 Land Use Land Cover

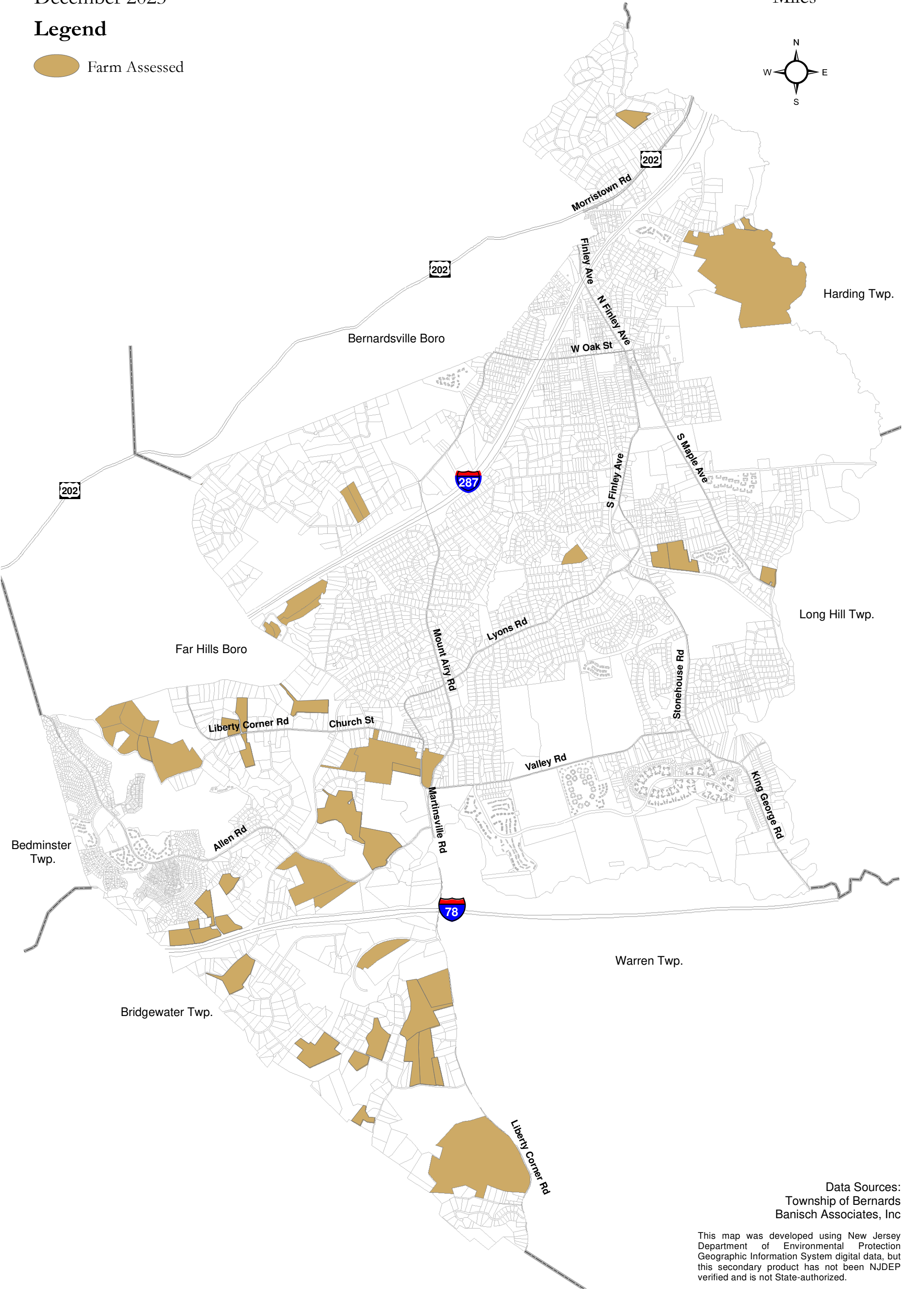
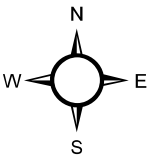
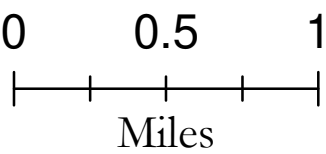
This map was developed using New Jersey Department of Environmental Protection Geographic Information System digital data, but this secondary product has not been NJDEP verified and is not State-authorized.

Figure II-2 Farm Assessed Lands

Township of Bernards
Somerset County, NJ
December 2023

Legend

 Farm Assessed



Data Sources:
Township of Bernards
Banisch Associates, Inc

This map was developed using New Jersey Department of Environmental Protection Geographic Information System digital data, but this secondary product has not been NJDEP verified and is not State-authorized.

Figure II-3 Land Use Plan

Township of Bernards

Somerset County, NJ

December 2023

Legend

- Residential Low Density

Residential Medium Density

Multi-Family

CR-1 District

CR-2 District

P-1

P-2

P-3

P-4

P-5
- Mining

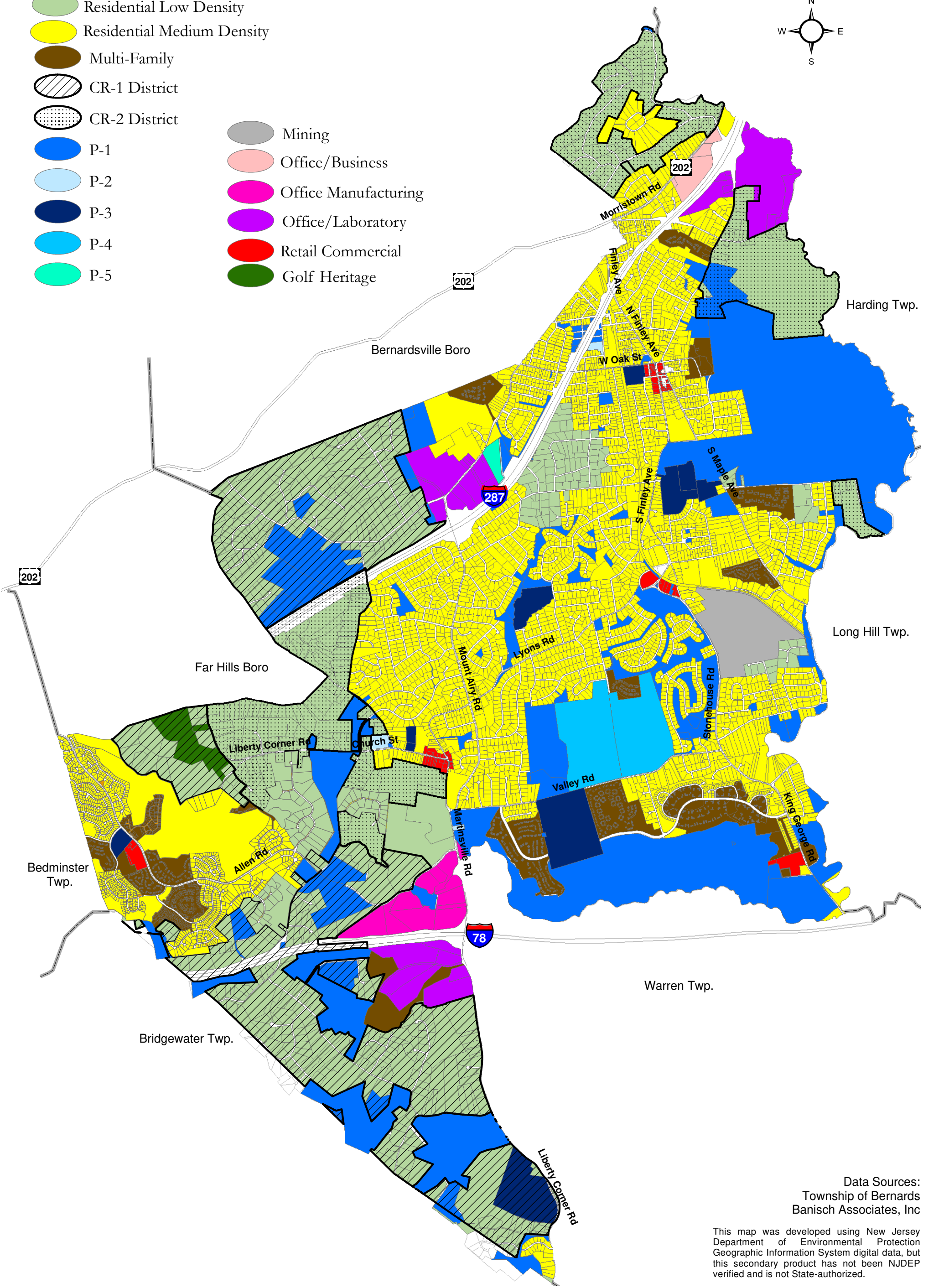
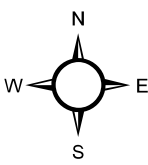
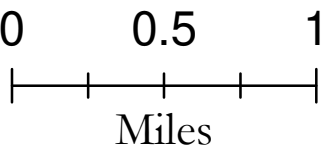
Office/Business

Office Manufacturing

Office/Laboratory

Retail Commercial

Golf Heritage

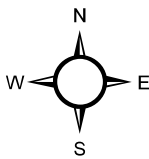
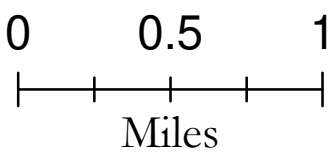


Data Sources:
Township of Bernards
Banisch Associates, Inc

This map was developed using New Jersey Department of Environmental Protection Geographic Information System digital data, but this secondary product has not been NJDEP verified and is not State-authorized.

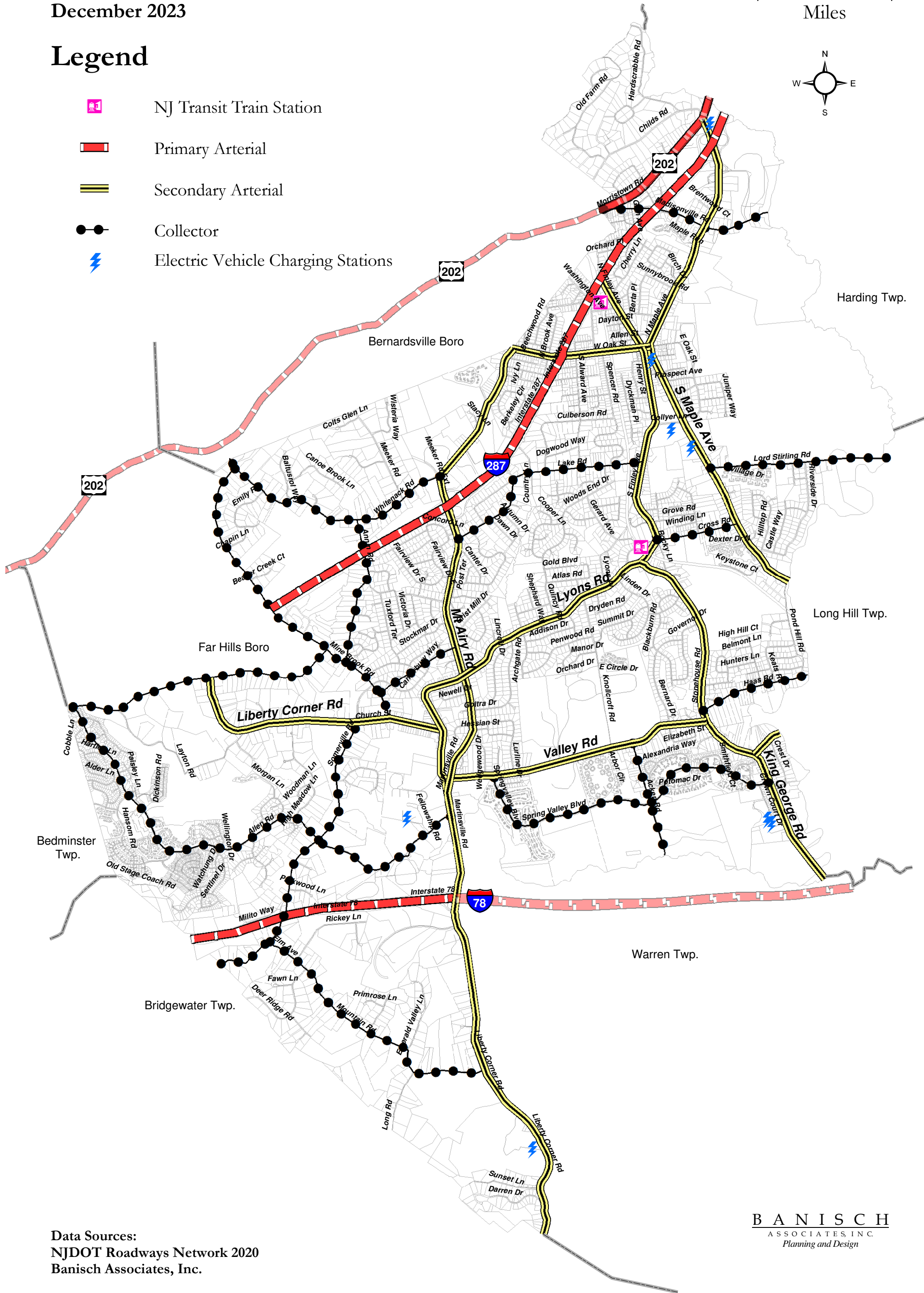
Figure V-1 Functional Classifications of Roadways

Township of Bernards
Somerset County, NJ
December 2023



Legend

- NJ Transit Train Station
- Primary Arterial
- Secondary Arterial
- Collector
- Electric Vehicle Charging Stations



Data Sources:
NJDOT Roadways Network 2020
Banisch Associates, Inc.

Figure V-2 Location of Planned Major Developments

Township of Bernards
Somerset County, NJ
December 2023

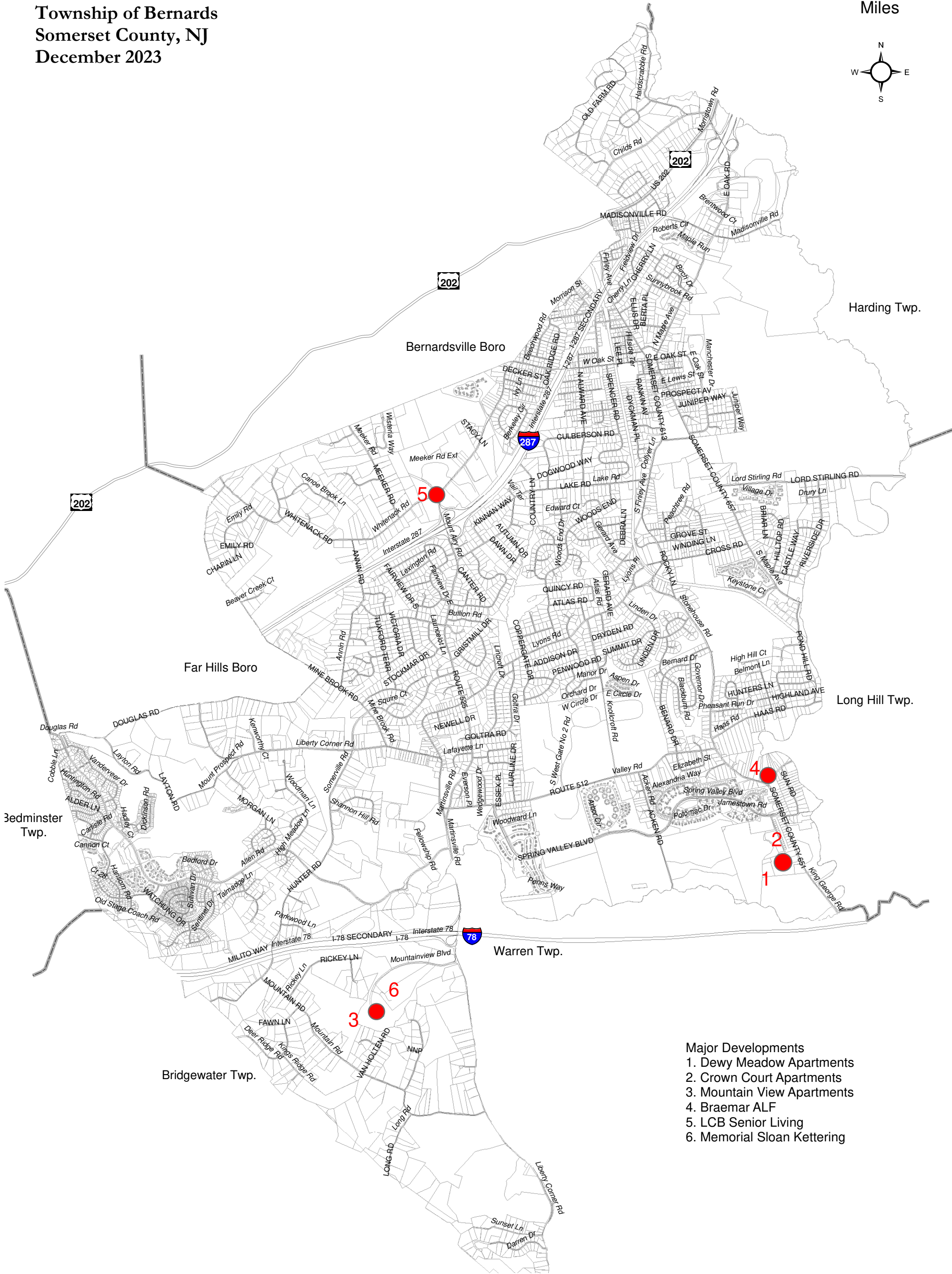
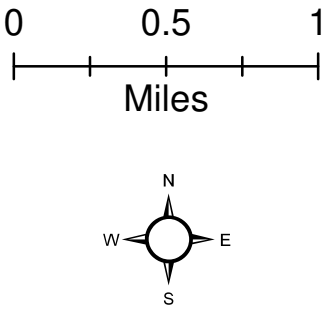
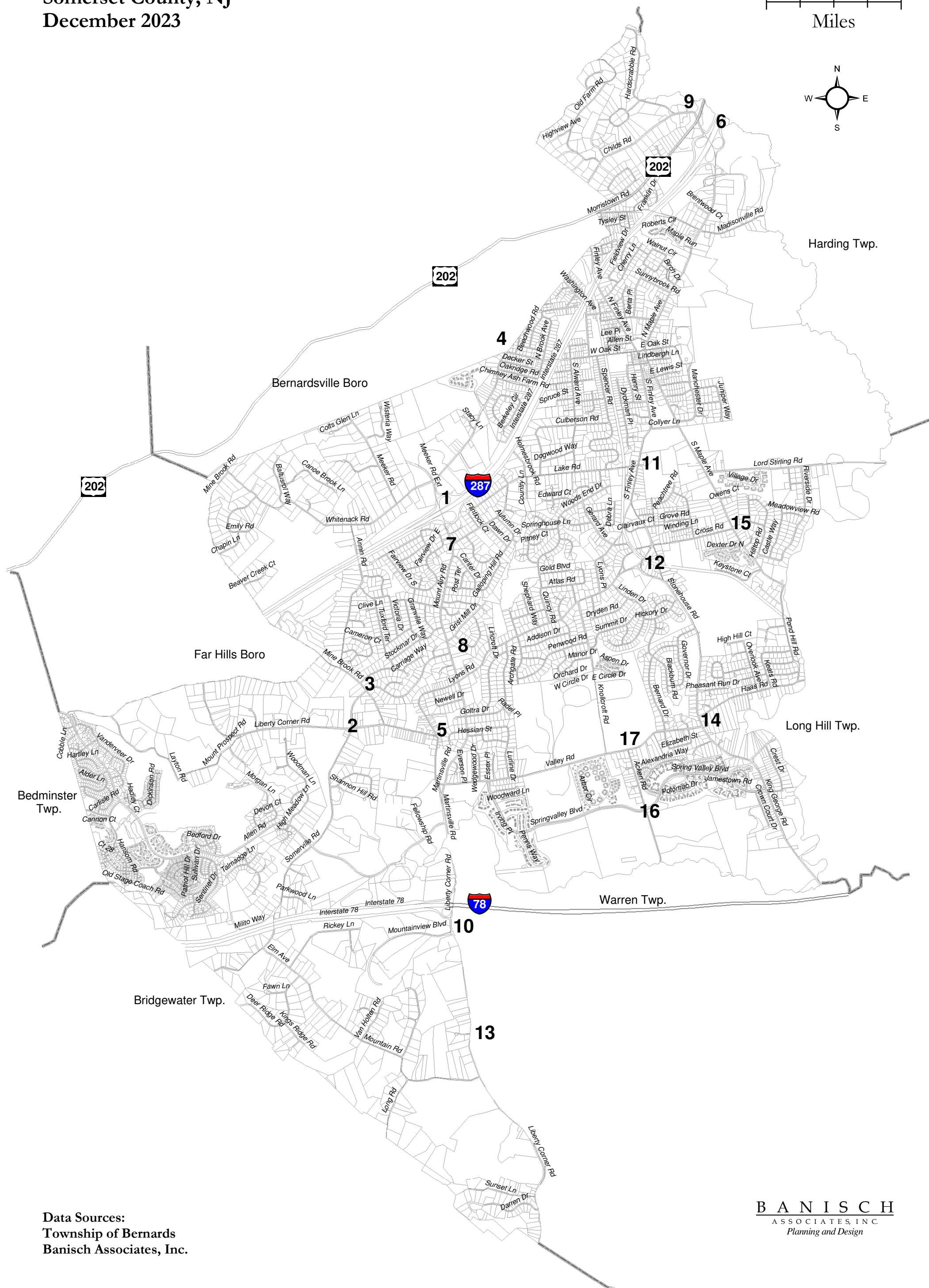
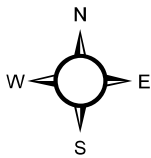
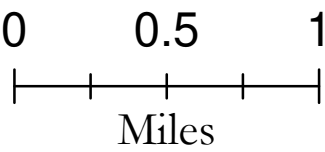


Figure V-3 Intersection Clearing Improvements

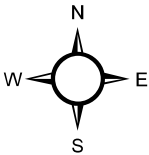
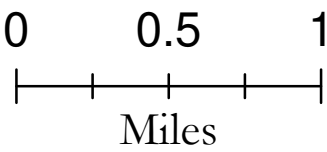
Township of Bernards
Somerset County, NJ
December 2023



Data Sources:
Township of Bernards
Banisch Associates, Inc.

Figure V-4 Bicycle, Pedestrian, and Greenway Plan

Township of Bernards
Somerset County, NJ
December 2023



Legend

Off-Road Paths and Greenways

- Existing Off-Road Path
- Off-Road Path In Progress
- Proposed Location of Off-Road Path
- Proposed Open Space and Corridors

Open Space and Recreation Areas

- Athletic Fields
- Board of Education Field
- Board of Education Open Space
- County Open Space
- County Park
- LC Fire Company
- Municipal Golf Course
- Preservation Rights
- Private Open Space
- Township Open Space
- Township Park
- YMCA
- Streams

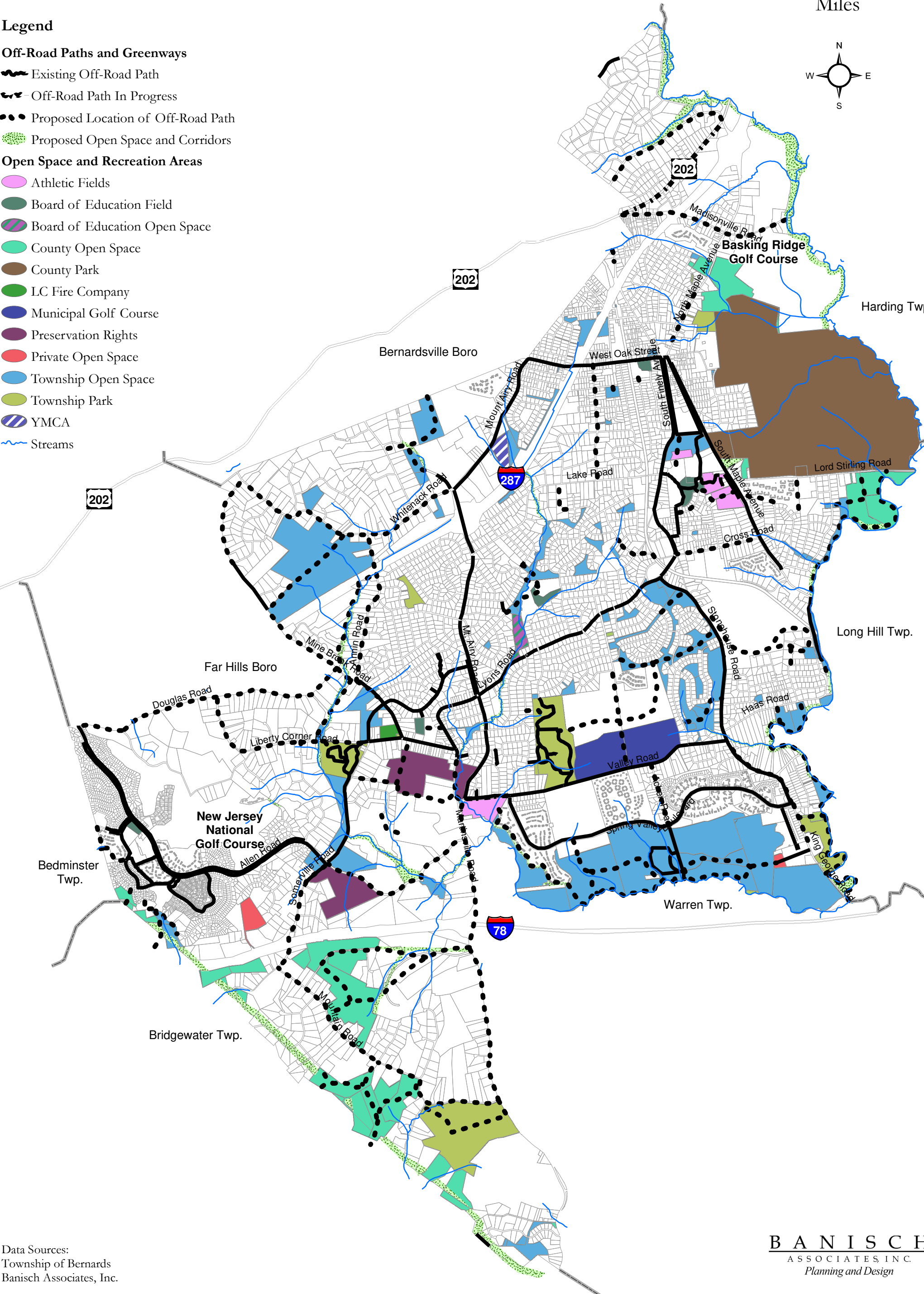
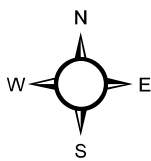
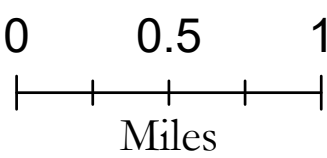
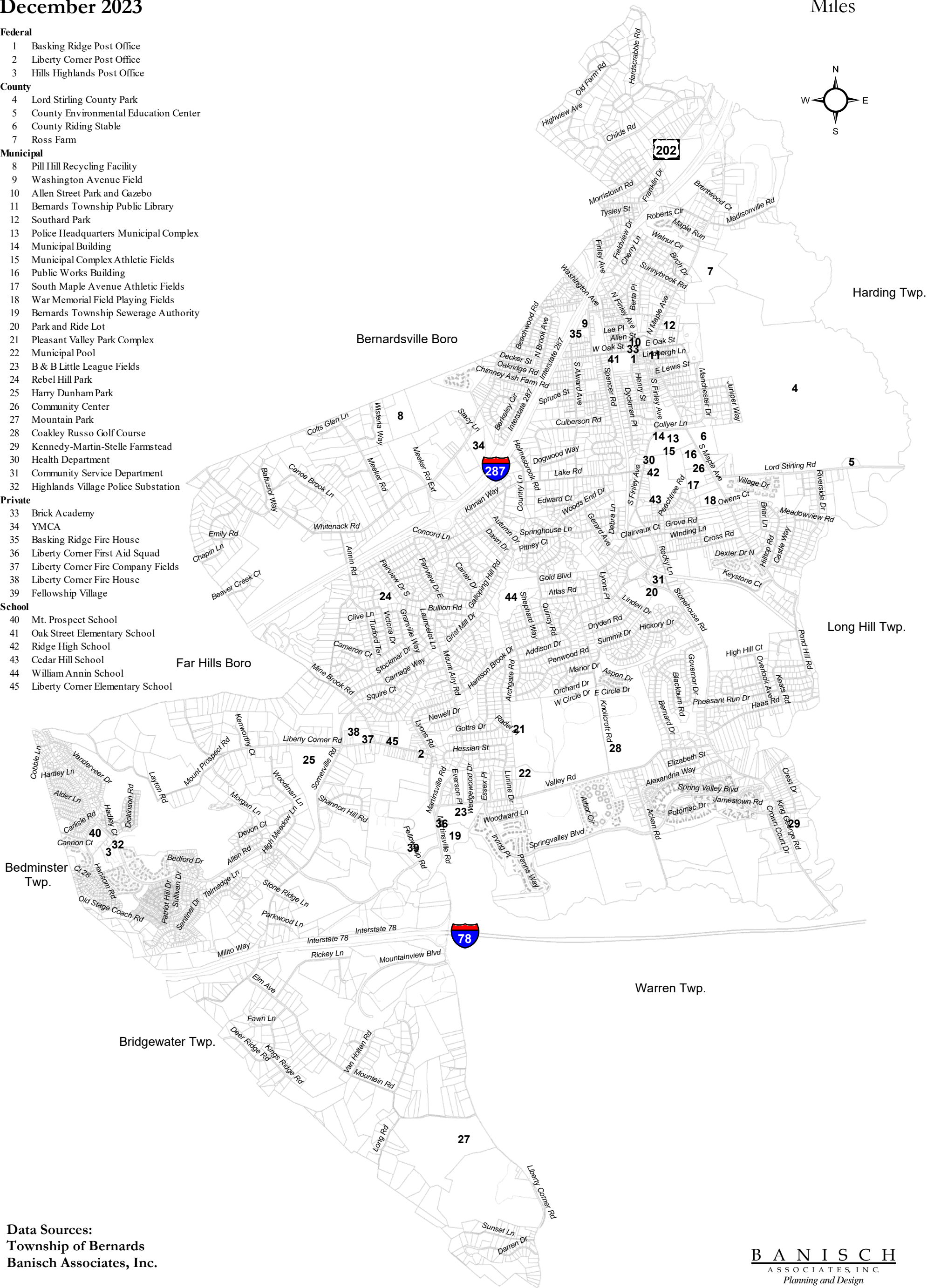


Figure VI-1 Community Facilities Plan

Township of Bernards
Somerset County, NJ
December 2023



- Federal**
 - 1 Basking Ridge Post Office
 - 2 Liberty Corner Post Office
 - 3 Hills Highlands Post Office
- County**
 - 4 Lord Stirling County Park
 - 5 County Environmental Education Center
 - 6 County Riding Stable
 - 7 Ross Farm
- Municipal**
 - 8 Pill Hill Recycling Facility
 - 9 Washington Avenue Field
 - 10 Allen Street Park and Gazebo
 - 11 Bernards Township Public Library
 - 12 Southard Park
 - 13 Police Headquarters Municipal Complex
 - 14 Municipal Building
 - 15 Municipal Complex Athletic Fields
 - 16 Public Works Building
 - 17 South Maple Avenue Athletic Fields
 - 18 War Memorial Field Playing Fields
 - 19 Bernards Township Sewerage Authority
 - 20 Park and Ride Lot
 - 21 Pleasant Valley Park Complex
 - 22 Municipal Pool
 - 23 B & B Little League Fields
 - 24 Rebel Hill Park
 - 25 Harry Dunham Park
 - 26 Community Center
 - 27 Mountain Park
 - 28 Coakley Russo Golf Course
 - 29 Kennedy-Martin-Stelle Farmstead
 - 30 Health Department
 - 31 Community Service Department
 - 32 Highlands Village Police Substation
- Private**
 - 33 Brick Academy
 - 34 YMCA
 - 35 Basking Ridge Fire House
 - 36 Liberty Corner First Aid Squad
 - 37 Liberty Corner Fire Company Fields
 - 38 Liberty Corner Fire House
 - 39 Fellowship Village
- School**
 - 40 Mt. Prospect School
 - 41 Oak Street Elementary School
 - 42 Ridge High School
 - 43 Cedar Hill School
 - 44 William Annin School
 - 45 Liberty Corner Elementary School



Data Sources:
Township of Bernards
Banisch Associates, Inc.

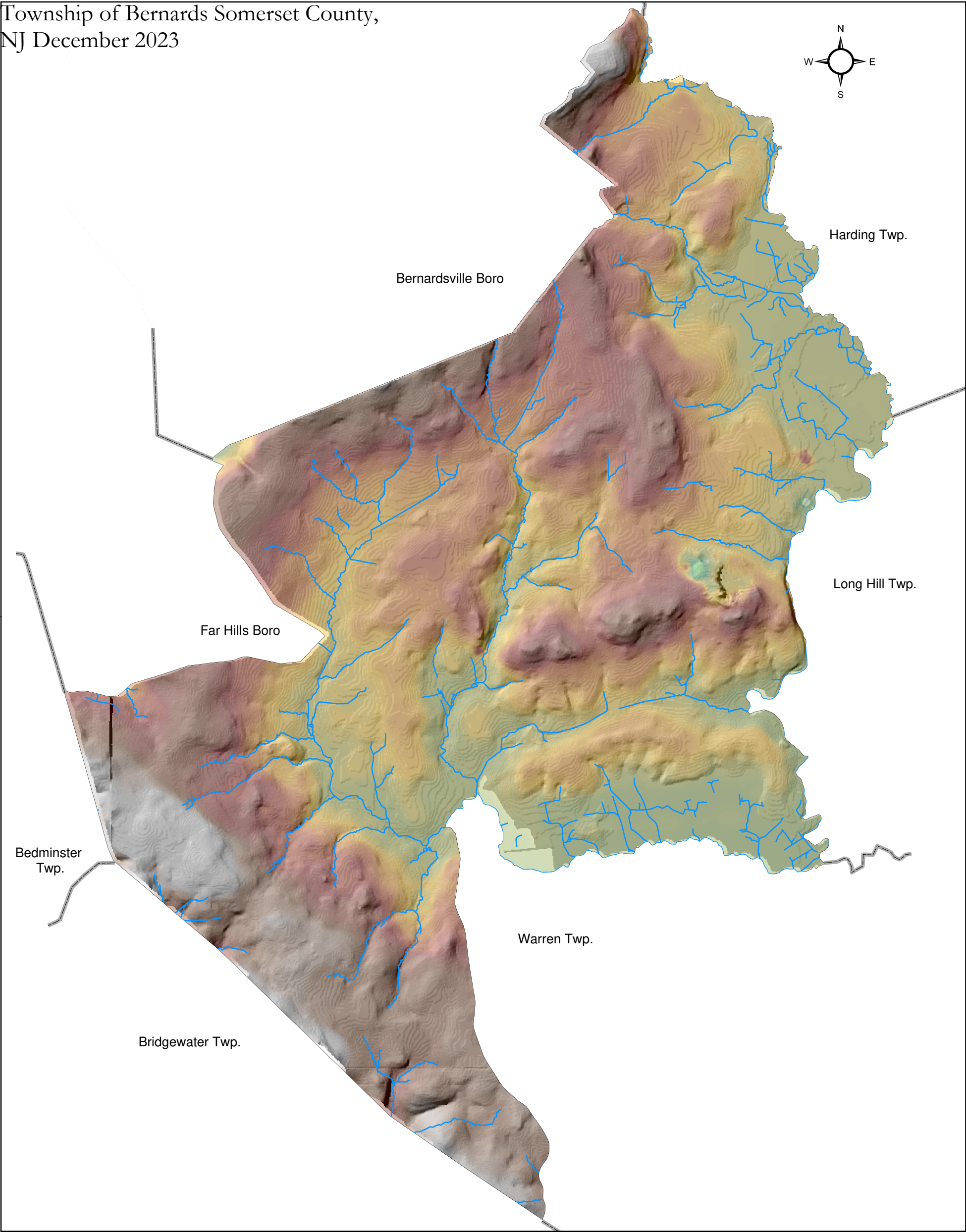
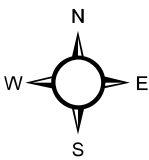
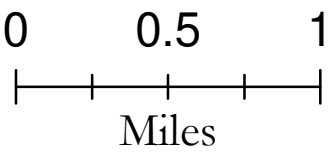


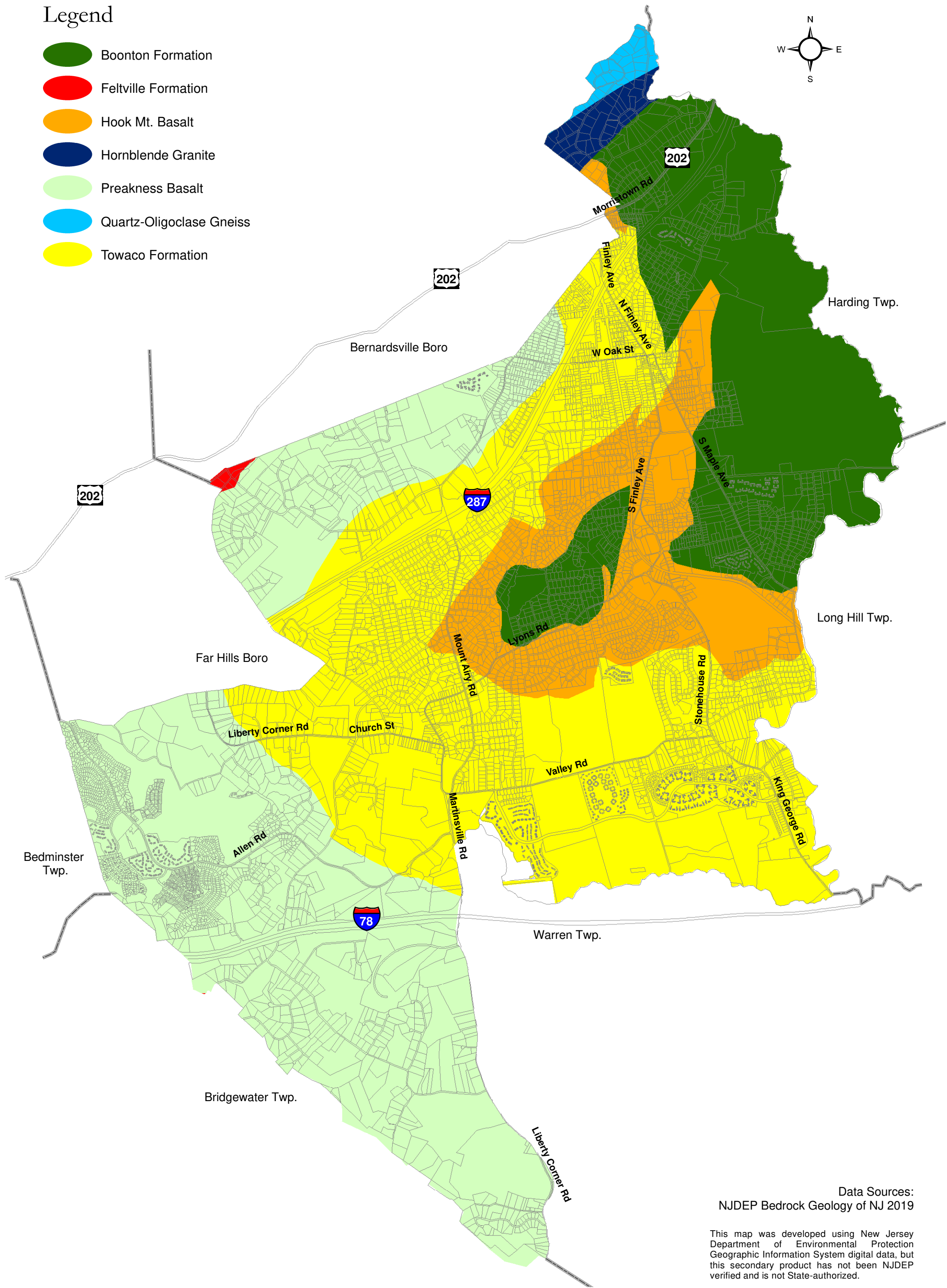
Figure VIII-2 Bedrock Geology

Township of Bernards
Somerset County, NJ
December 2023



Legend

- Boonton Formation
- Feltville Formation
- Hook Mt. Basalt
- Hornblende Granite
- Preakness Basalt
- Quartz-Oligoclase Gneiss
- Towaco Formation

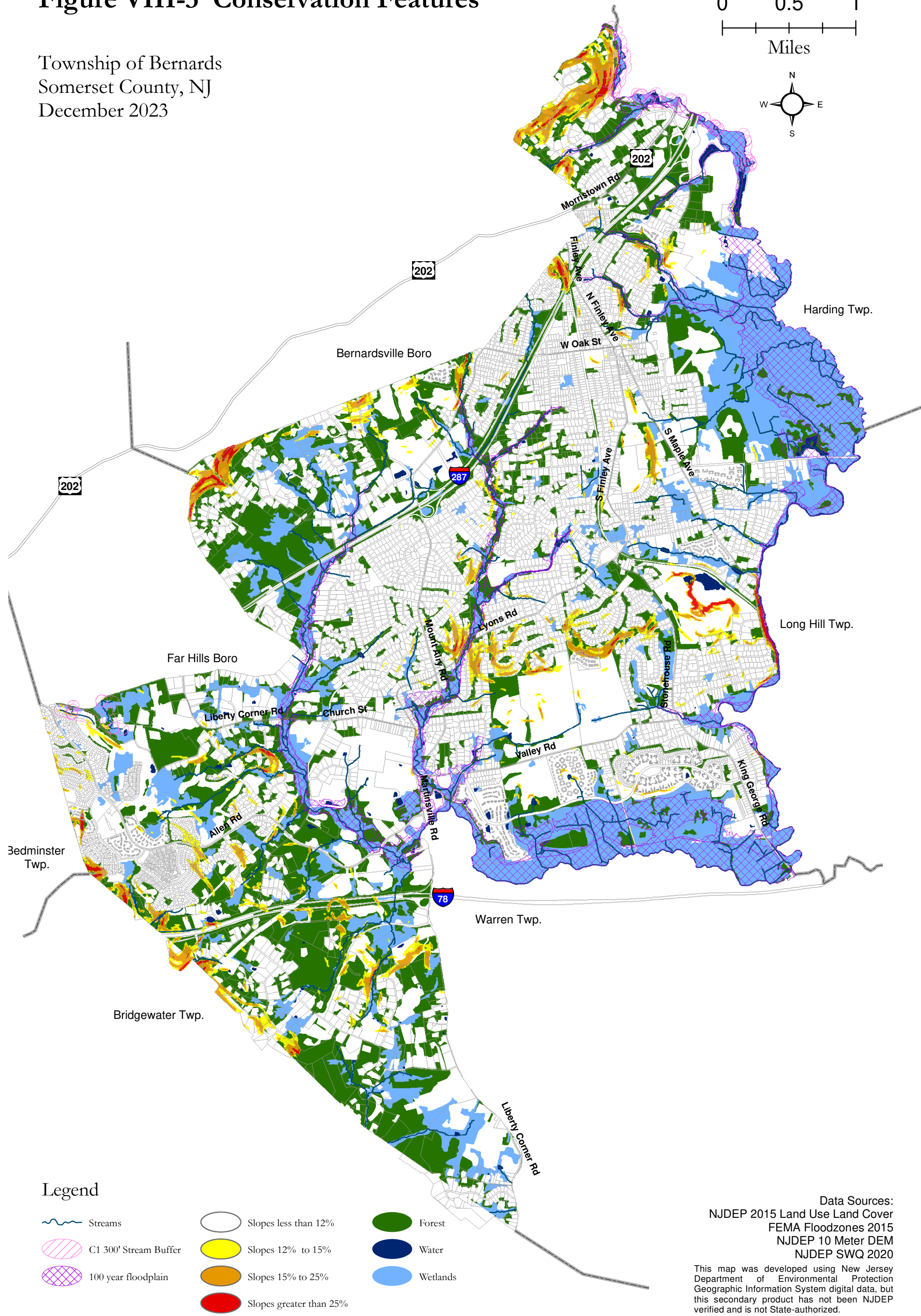
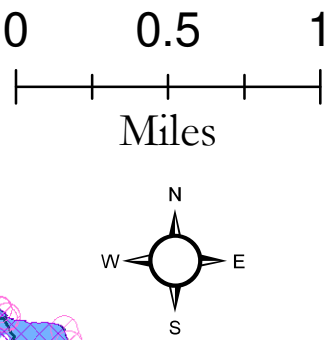


Data Sources:
NJDEP Bedrock Geology of NJ 2019

This map was developed using New Jersey Department of Environmental Protection Geographic Information System digital data, but this secondary product has not been NJDEP verified and is not State-authorized.

Figure VIII-3 Conservation Features

Township of Bernards
Somerset County, NJ
December 2023



Legend

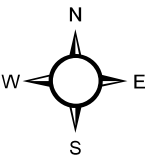
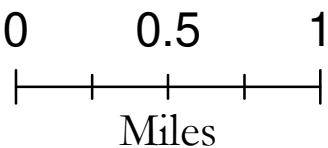
- | | | |
|-----------------------|-------------------------|----------|
| Streams | Slopes less than 12% | Forest |
| C1 300' Stream Buffer | Slopes 12% to 15% | Water |
| 100 year floodplain | Slopes 15% to 25% | Wetlands |
| | Slopes greater than 25% | |

Data Sources:
NJDEP 2015 Land Use Land Cover
FEMA Floodzones 2015
NJDEP 10 Meter DEM
NJDEP SWQ 2020

This map was developed using New Jersey Department of Environmental Protection Geographic Information System digital data, but this secondary product has not been NJDEP verified and is not State-authorized.

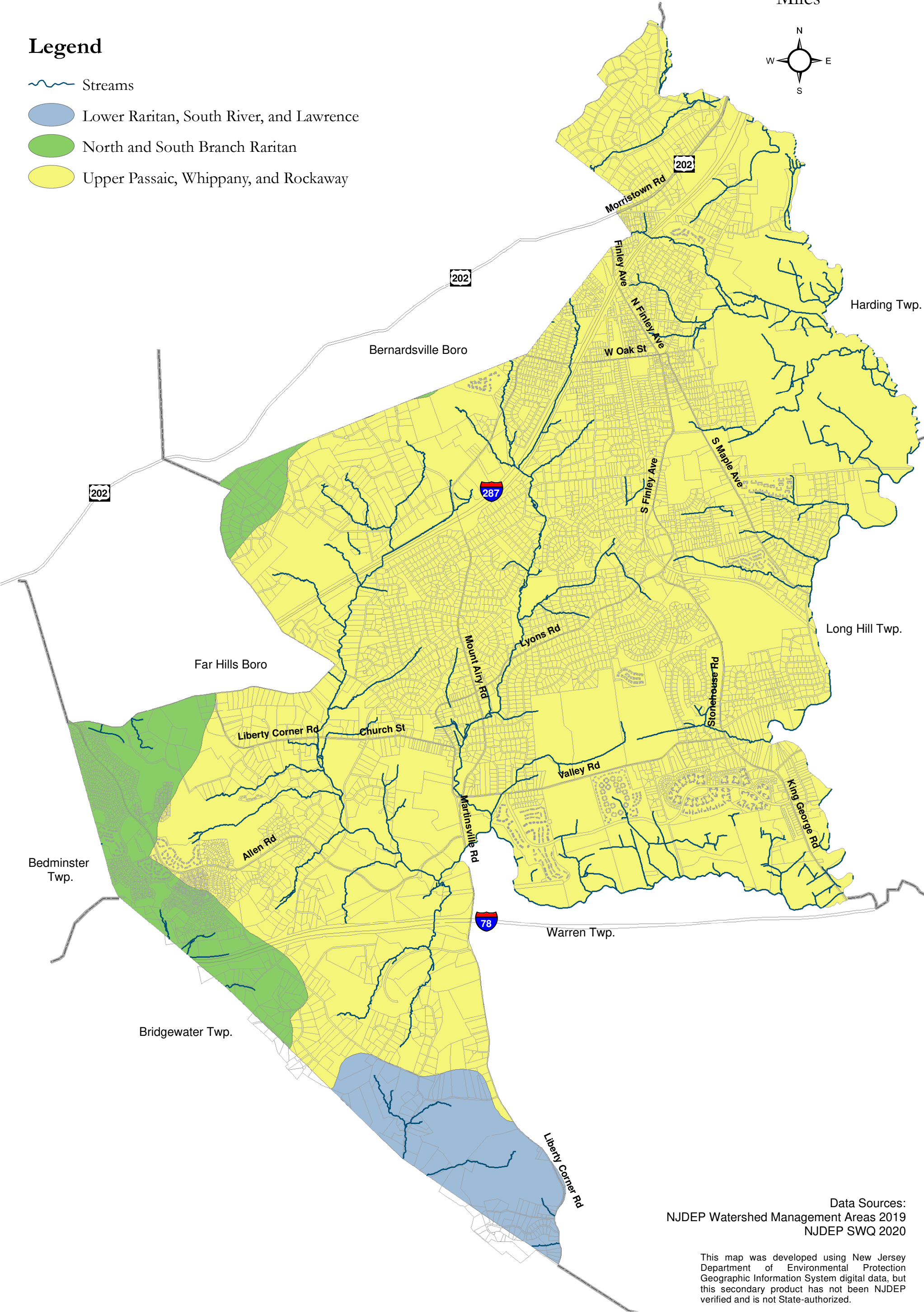
Figure VIII-4 Watershed Management Areas

Township of Bernards
Somerset County, NJ
December 2023



Legend

- Streams
- Lower Raritan, South River, and Lawrence
- North and South Branch Raritan
- Upper Passaic, Whippany, and Rockaway



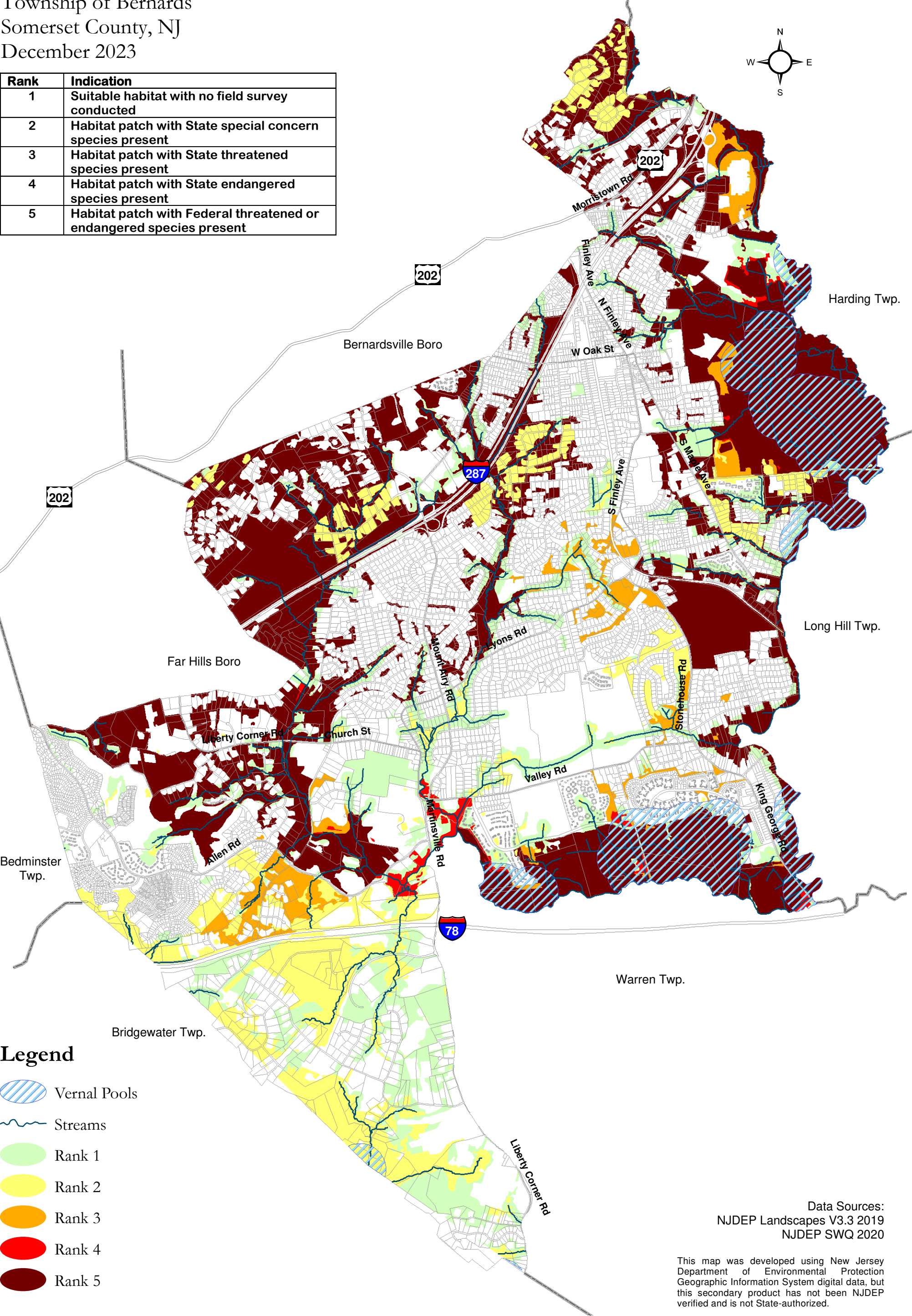
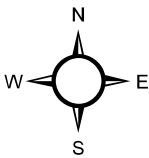
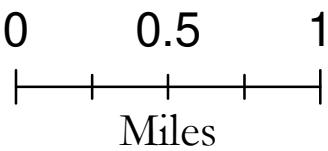
Data Sources:
NJDEP Watershed Management Areas 2019
NJDEP SWQ 2020

This map was developed using New Jersey Department of Environmental Protection Geographic Information System digital data, but this secondary product has not been NJDEP verified and is not State-authorized.

Figure VIII-5
NJ Landscapes Project Version 3.3
Critical Habitat Data

Township of Bernards
Somerset County, NJ
December 2023

Rank	Indication
1	Suitable habitat with no field survey conducted
2	Habitat patch with State special concern species present
3	Habitat patch with State threatened species present
4	Habitat patch with State endangered species present
5	Habitat patch with Federal threatened or endangered species present



Legend

- Vernal Pools
- Streams
- Rank 1
- Rank 2
- Rank 3
- Rank 4
- Rank 5

Data Sources:
NJDEP Landscapes V3.3 2019
NJDEP SWQ 2020

This map was developed using New Jersey Department of Environmental Protection Geographic Information System digital data, but this secondary product has not been NJDEP verified and is not State-authorized.

Figure VIII-6

Open Space and Conservation Areas

Township of Bernards
Somerset County, NJ
December 2023

Note: Please refer to Table VIII-1 for the index to Open Space and Conservation Areas.

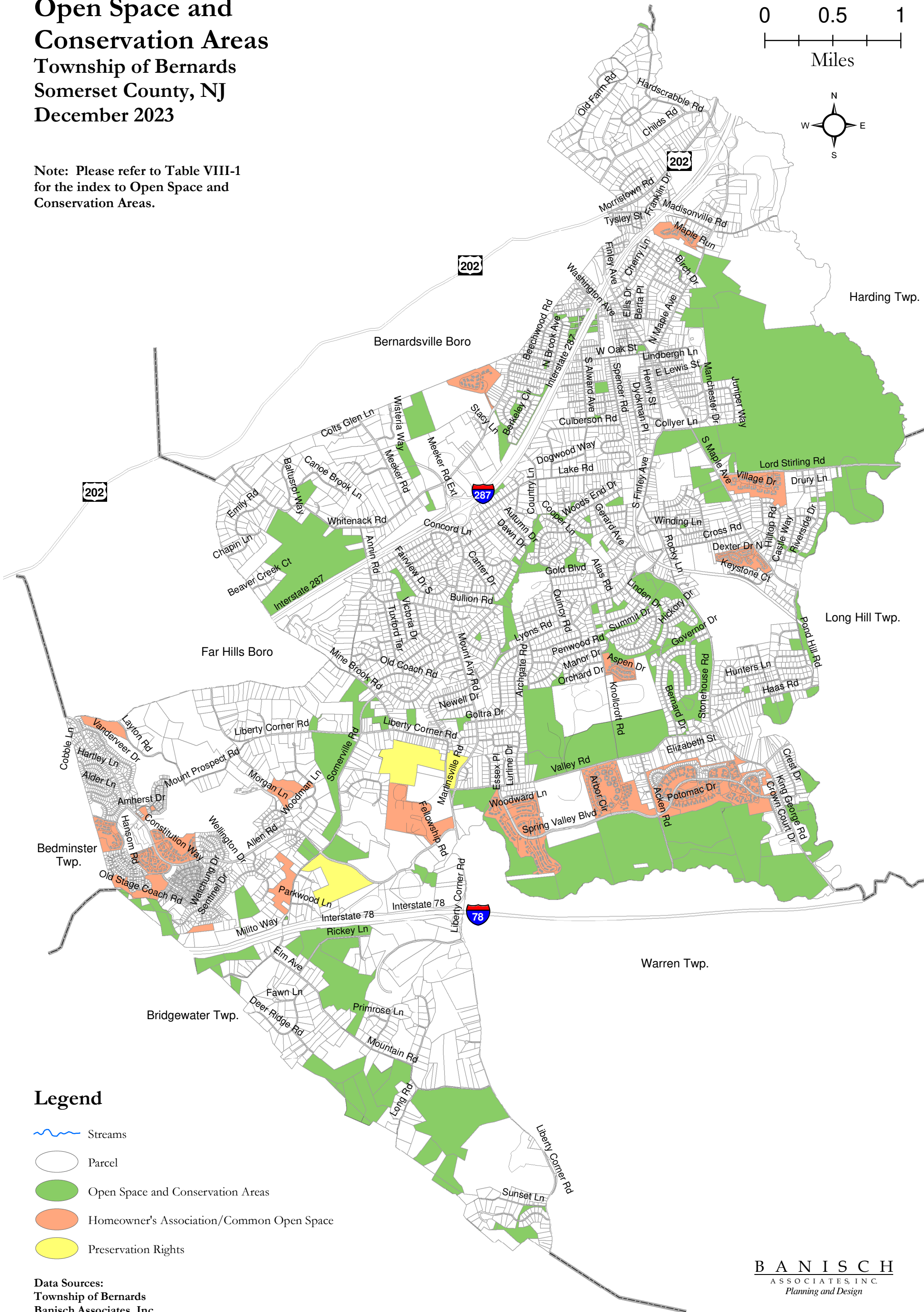
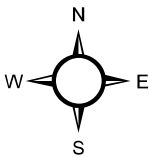
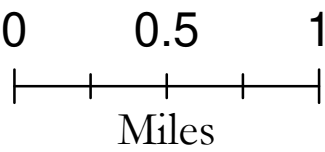


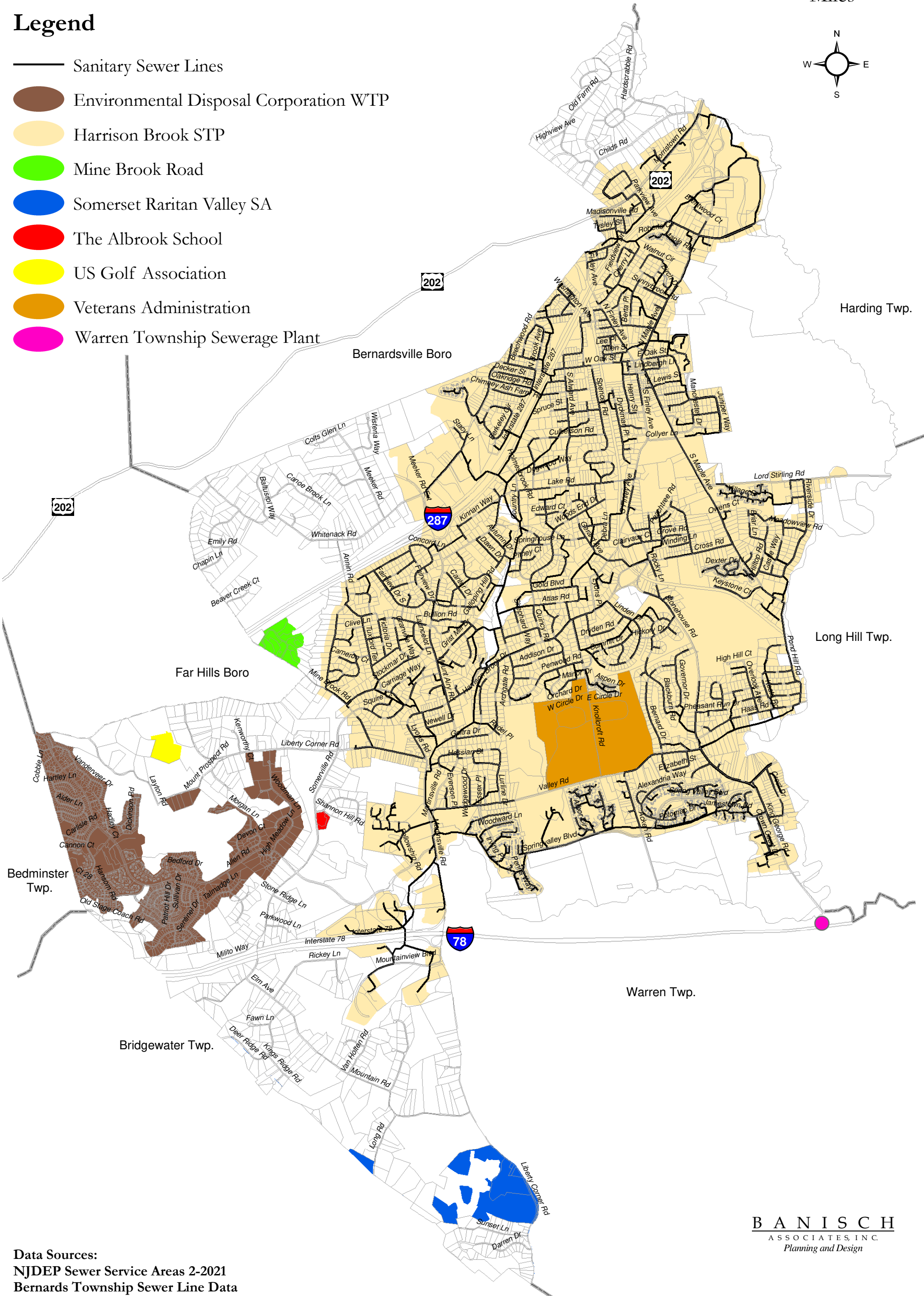
Figure IX-1 Sewer Service Areas

Township of Bernards
Somerset County, NJ
December 2023



Legend

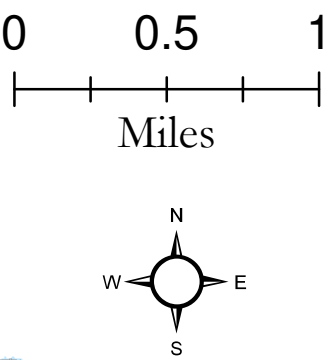
- Sanitary Sewer Lines
- Environmental Disposal Corporation WTP
- Harrison Brook STP
- Mine Brook Road
- Somerset Raritan Valley SA
- The Albrook School
- US Golf Association
- Veterans Administration
- Warren Township Sewerage Plant



Data Sources:
NJDEP Sewer Service Areas 2-2021
Bernards Township Sewer Line Data

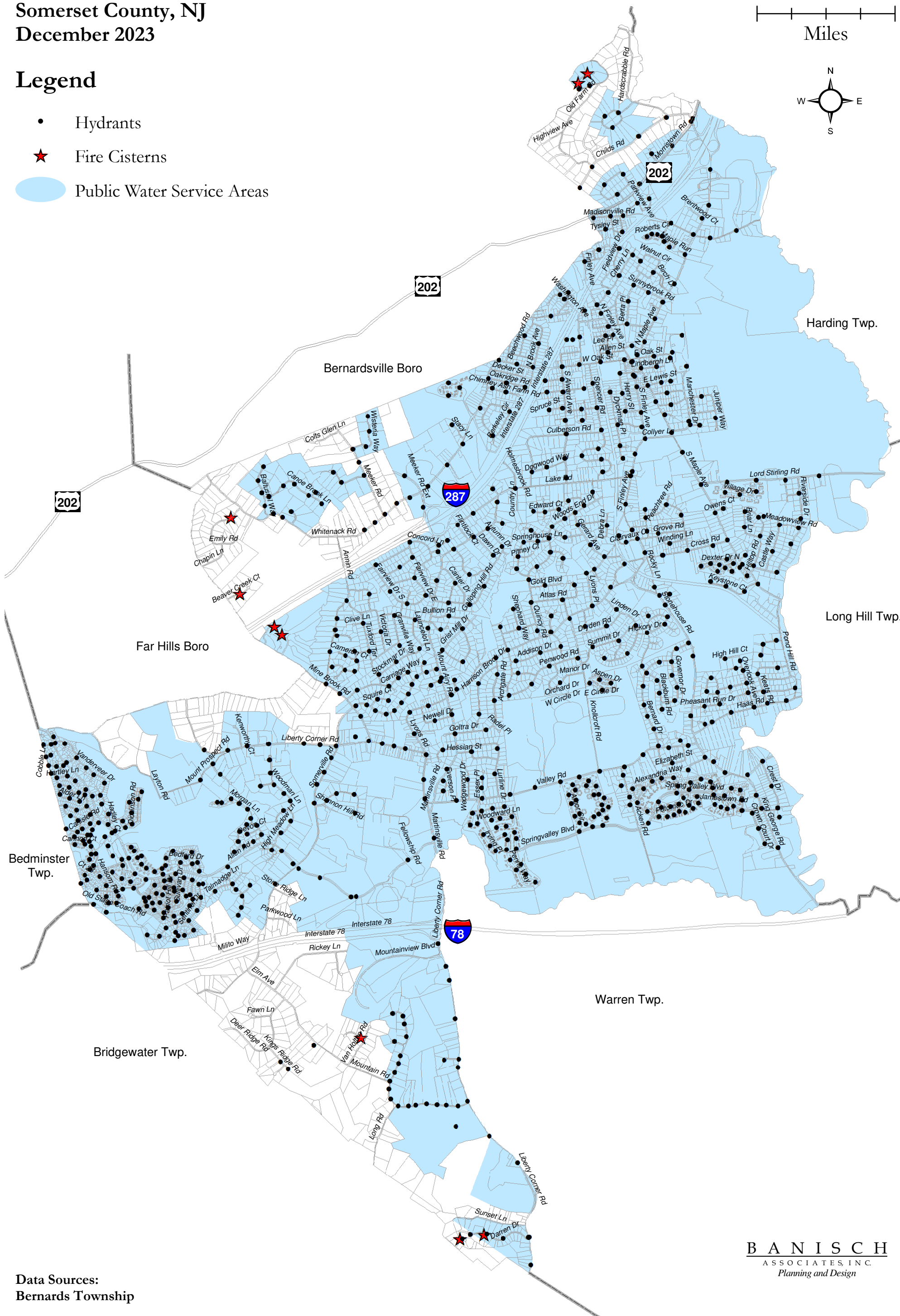
Figure IX-2 Public Water Supply Areas

Township of Bernards
Somerset County, NJ
December 2023



Legend

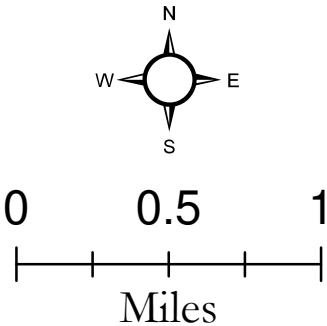
- Hydrants
- ★ Fire Cisterns
- Public Water Service Areas



Data Sources:
Bernards Township

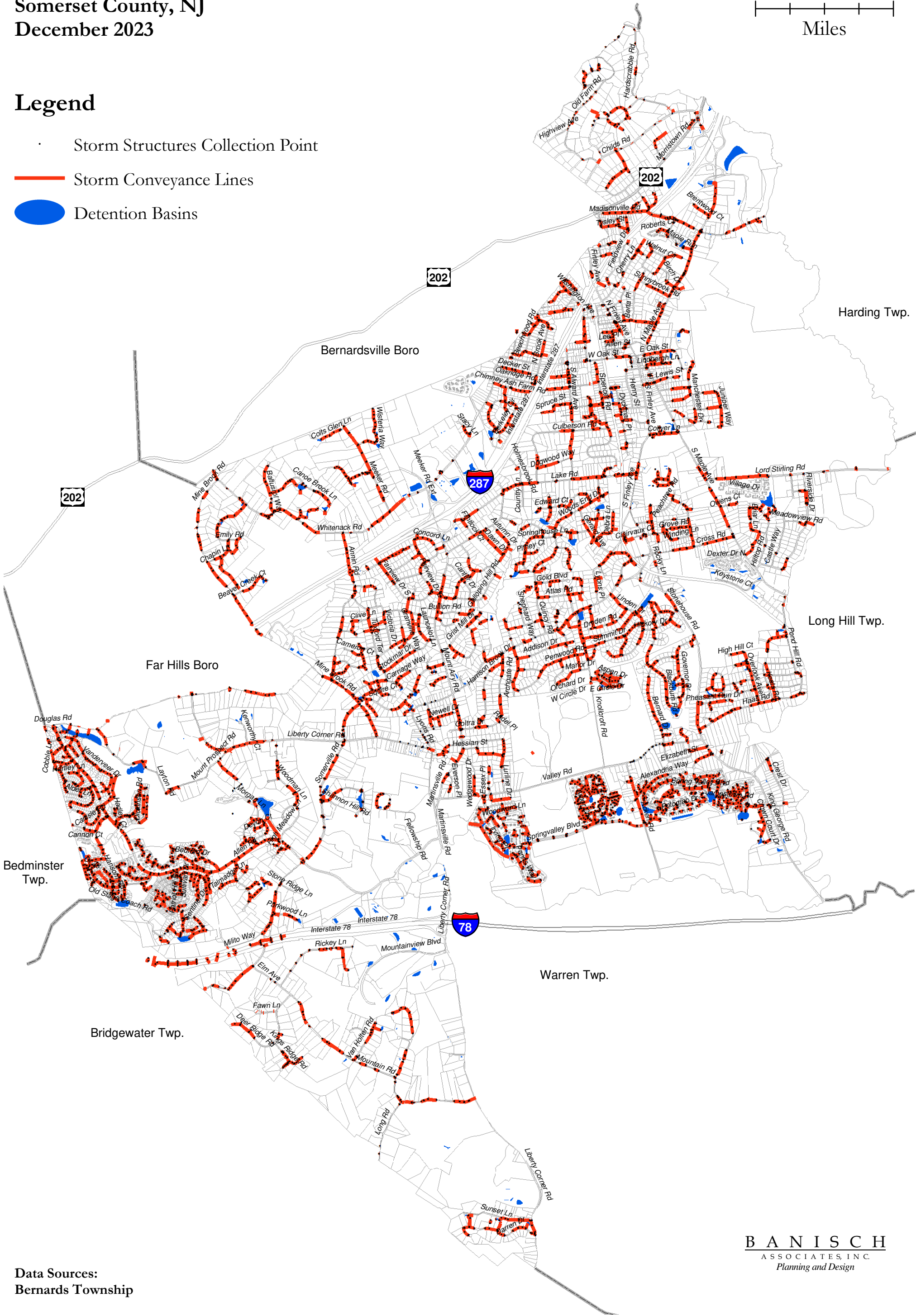
Figure IX-3 Stormwater Collection Facilities

Township of Bernards
Somerset County, NJ
December 2023



Legend

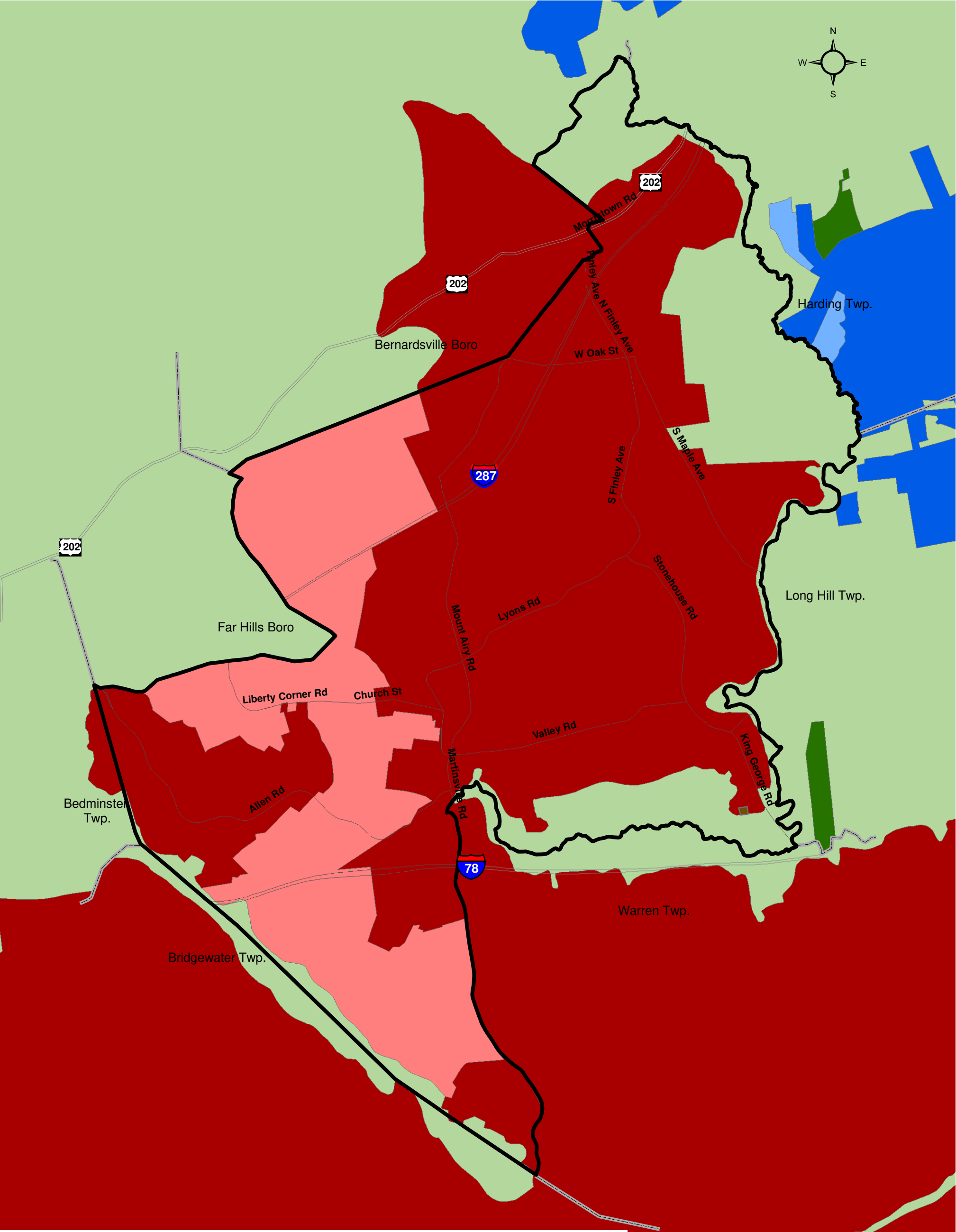
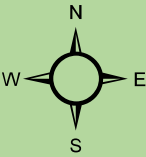
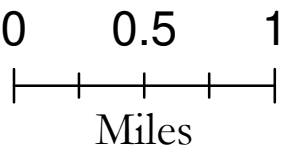
- Storm Structures Collection Point
- Storm Conveyance Lines
- Detention Basins



Data Sources:
Bernards Township

State Plan Policy Map - Land Use Plan

Township of Bernards
Somerset County, NJ
December 2023



Legend

- PA 2: Suburban
- PA 3: Fringe
- PA 5: Environmentally Sensitive
- Federal Park - Cross Association
- Federal Park
- State Park

Data Sources:
NJDEP SDRP
Banisch Associates, Inc

This map was developed using New Jersey Department of Environmental Protection Geographic Information System digital data, but this secondary product has not been NJDEP verified and is not State-authorized.